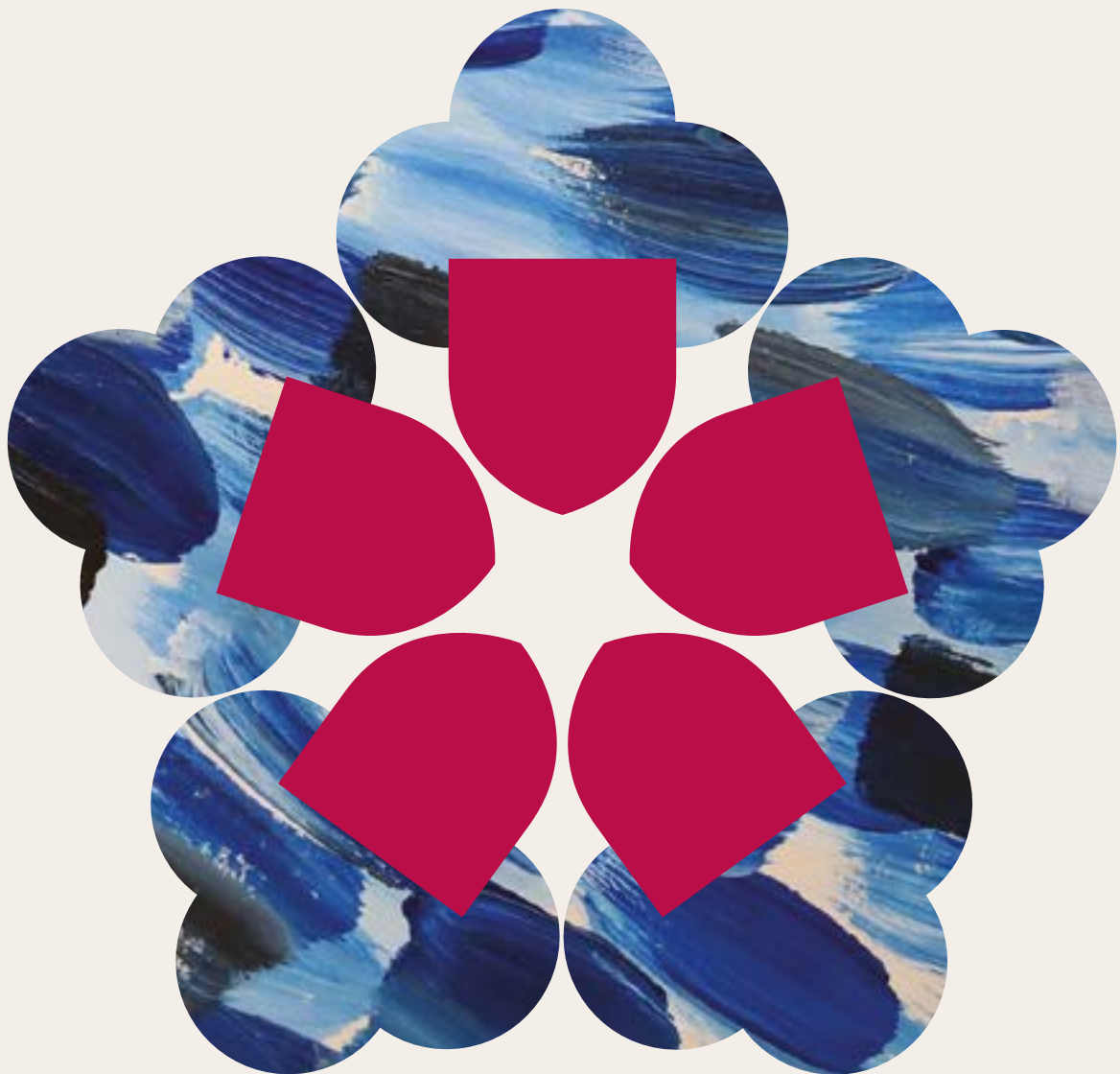


ADMISSIONS

Boarding and Day · Girls 11 – 18

2026 – 2027



TUDOR
HALL

Founded in 1850, Tudor Hall is one of the oldest girls’ boarding and day schools in Britain, providing the best possible experiences and outcomes for girls for 175 years.

We are experts in girls’ boarding education, tailoring everything we do to optimise girls’ experience and outcomes.

Surrounded by acres of parkland in rural Oxfordshire, but only 1 hour from London and 25 minutes from Oxford, girls are safe and secure – in every sense of the words – to be themselves and find their place in the world.

All Tudor girls have personal qualities which make them unique – they may be a great team player, a fantastic listener, a strong leader, a creative thinker, a calming influence, a problem-solver, kind and caring, level-headed and analytical. Giving our girls a wide variety of opportunities to help identify what it is they have, and supporting them to develop these skills and qualities, is part of the magic of Tudor.

We extend a warm invitation to you and your daughter to visit us at Tudor Hall and experience this extraordinary school community for yourself.



Welcome

Choosing a school for your daughter is an important decision and we aim to give you the information to help you decide whether Tudor Hall is the right school. We welcome pupils from many different cultures, faiths and backgrounds and it is our intention to make our selection procedure equally accessible to all candidates. We are here to guide you through every step of the admissions process.

Open Mornings

We encourage parents to attend an Open Morning when their daughter is in Year 5 or earlier. These are held in May and September and provide an informal introduction to Tudor Hall.

Open Fridays

We hold ‘Open Fridays’ once a month to provide an opportunity to see the school on a typical school day, have a tour and meet the Senior Team.

Visits

Before applying for a place, we strongly recommend, where possible, that prospective pupils and their parents visit the school to meet with Julie Lodrick, the Headmistress, staff and pupils and to see the facilities. We suggest you visit in the two years prior to assessments; visits can be arranged by contacting the Admissions Team on admissions@tudorhallschool.com

Entry points

The main points of entry are at Todd (Year 7), IIIs (Year 9) and LVI (Year 12). Occasionally, places are available in IIs (Year 8) and IVs (Year 10).

Registration for 11+ and 13+ entry can be completed at any stage but should be received by 1st June of Year 5 (i.e., two years prior to entry for 11+ and four years prior to entry for 13+). Applications for 16+ entry should be submitted by the end of the Autumn Term of the year prior to entry.

For those attending a 13+ prep school, assessments for entry are held in the Autumn Term of Year 6 and offers of a place are made in December of that year.

If you wish to proceed with an application, we ask that you complete our registration form in addition to sending a £240 registration fee together with a copy of your daughter’s latest school report and passport. On receipt of the registration fee and these documents, your daughter will be registered for entry and a member of the Admissions Team will be in touch to confirm the next steps.



Contents

Life at Tudor	4
Admissions process	5
Admissions calendar	6
Fees assistance	7
Academic	8
Creative Arts	10
Dance	13
Drama	14
Music	16
Sport	18



Life at Tudor

JOINING AS A BOARDER

Family-focused boarding

Tudor Hall is one of the oldest girls' boarding schools in the UK and we are committed to our boarding ethos. Being a boarder at Tudor Hall offers a home from home and the opportunity to develop independence and life skills under the care and guidance of house staff who are experts in the needs of the year group. Our horizontal boarding structure fosters an environment where boarders develop a strong sense of loyalty and inclusivity through community living.

Whilst our full boarding ethos continues to be at the core of Tudor life, we recognise that more adaptable boarding options can be useful for families. To help families and their changing needs, we are offering new family-focused options in Todd and IIs (Years 7&8).

Lower School – Todd and IIs (Years 7&8)

- Full Boarding – 7 nights a week
- Weekly Boarding – Sunday evening/Monday morning to Friday afternoon
- Occasional Boarding – Monday to Thursday (subject to availability)
- Day Girls
- Core education will take place Monday to Friday, allowing pupils the option to go home after school on Friday, returning either Sunday evening or Monday morning.

Our horizontal boarding structure fosters an environment where boarders develop a strong sense of loyalty and inclusivity through community living.

Whilst our full boarding ethos continues to be at the core of Tudor life, we recognise that more adaptable boarding options can be useful for families.

- There will continue to be an exciting Saturday morning programme of educational enrichment activities to which all girls are welcome.
- Weekend activities will continue with a wide range of interesting, challenging and fun activities for boarders and day girls alike.
- The majority of Lower School sports fixtures will be during the school week, and occasionally on Saturday mornings.

These changes are reflected in our new Lower School fee structure; please visit our website for details: tudorhallschool.com/joining

IIIs and IVs (Years 9&10)

- Family-focused option for IIIs pupils to go home after lessons and commitments on Saturday, returning either Sunday evening or Monday morning.
- Full boarding, partial boarding (two consecutive nights Monday to Thursday) and day options continue.
- A closed weekend at the start and end of every term (and before the October Half Term in the Autumn Term) will continue for the IIIs to the Upper Sixth, when all girls take part in a range of community-based activities.
- Full weekend programme of co-curricular activities remains a core feature of Tudor life.

Vs (Year 11)

Our boarding ethos and strong sense of community are important to us and we ensure that girls benefit from a full weekend programme, whilst still being able to spend time with their families. Each term, there are two 'closed weekends', where all full boarders remain in school; however, full boarders in the Vs may take six additional 'short exeats' over the course of the year, leaving on Saturday after their commitments and returning to school on Sunday evening.

Sixth Form

There is great flexibility at weekends to accommodate university open days, work experience and family commitments. The LVI are permitted to take seven 'short exeats' throughout the year, leaving on Saturday after their commitments and returning to school on Sunday evening. With the exception of closed weekends, the UVI may go home on any weekend, providing they have no school commitments and are up to date with their work.

As a day pupil in a boarding school, girls have access to all facilities and activities during evenings and weekends.

JOINING AS A DAY GIRL

As a day pupil in a boarding school, girls have access to all facilities and activities during evenings and weekends. Day girls are in school from 8am until 6pm and are welcome to stay for supper and then join in evening activities if they wish. For IIIs and above, we run Saturday morning lessons from 8.30am until 12.15pm and there are often fixtures in the afternoon. Day girls are welcome to join in with weekend activities if they wish to do so.

We will also offer all current day girls a trial week of boarding, should families be considering our boarding options. Trial boarding weeks will take place in the Spring and Summer Term.

Parents

Parents are always welcome to join us on a Saturday to watch their daughters play matches, and attend evening and weekend activities, such as concerts, the annual Dog Show and Tudor Fest music festival.

Admissions process

Todd (Year 7)

Girls applying for a place in September 2026 should be registered by 1st June 2025 and will be invited to a Taster Day later that month. Entrance assessments will take place on Saturday 15th November 2025.

IIIs (Year 9)

Girls applying for a place in September 2028 should be registered by 1st June 2025. Entrance assessments will take place on Saturday 15th November 2025.

For Todd and IIIs, the entry process is as follows:

- Candidates will sit computer-based, nationally standardised tests and complete a short creative writing task.
- Candidates are interviewed by senior members of staff and take part in a wide range of activities
- A reference is requested from the candidate's current school.

The highest performing candidates will be considered for an Academic Scholarship.

Both general entry and Academic Scholarship entry decisions will be based on the results of computer-based tests. No preparation is required for these tests and no practice materials are available.

LVI (Year 12)

Applications to the Sixth Form will be considered at any time during the year. External candidates are advised to apply by the end of the Autumn Term in the year preceding entry to guarantee that they are able to study their preferred combination of A Level subjects.

References will be sought from their current school and candidates will have an interview with either the Deputy Head Academic or the Head of Sixth Form.

For entry into the Sixth Form, candidates are required to have at least six good passes at GCSE, including English and Maths.

Other applications

Where we have capacity, applications are welcome for other year groups. Please check availability with the Admissions Team on admissions@tudorhallschool.com before proceeding.

International admissions

We welcome international applications either for candidates' complete educational journey or, depending on availability, for short stays of one term to one year.



Places are offered in the year prior to entry or earlier; girls are required to sit an entry assessment in their home country and have an interview with one of the senior staff. For all successful international applications, we request a deposit of £1,000 to secure the place for pupils staying for one year only, or a term's fees for those staying for more than one year.

International families are encouraged to visit the school in person and should contact the Admissions team to arrange a visit.

Places are strictly limited in each year group and therefore we recommend that International applicants complete the International Registration Form and pay the registration fee of £480 as early as possible to ensure that we have spaces available in the cohort.

Pupils whose parents are overseas are required by the school's guardianship policy to have a suitable educational guardian.

We are unable to begin the visa application process until the guardianship agreement has been submitted to us with the signatures of both parents and the educational guardians. The guardian should be from a recognised guardianship company (we recommend using a BSA or AEGIS-registered company). Full guardianship arrangements must be maintained throughout the pupil's time in the UK and at the school. A copy of the

guardianship policy and the guardianship agreement will be sent to complete once the place has been accepted and the deposit received. Tudor Hall will process the CAS application in the term prior to entry and supply the necessary formal CAS to enable parents to apply for a child student visa.

The school makes provision for international boarders to remain in school for exeats. This provision, as well as any activities that incur a cost, will be an additional charge of which parents will be advised in advance.

Accepting a place

To formally accept an offer of a place, we require a completed acceptance form and a deposit. Parents are also sent the Parent Contract; signing the acceptance form acts as an acceptance of the contact. For those joining Todd, the acceptance form and deposit should be returned by the first Monday in March in the year preceding entry. For places in the IIs, the acceptance form and deposit are due 20 months prior to arrival. Upon receipt of this document, the place will be secure.

For those joining the IVs or LVI, we also require a subject options form which will be sent electronically.

Closer to the point of entry, a Parents' Handbook and forms for completion will be sent, along with any paperwork required.

Admissions calendar

Application deadline	Sunday 1st June 2025
Year 5 Taster Day	Thursday 26th June 2025
Open Morning	Saturday 27th September 2025
Sixth Form Open Morning	Saturday 11th October 2025
Entrance assessments	Saturday 15th November 2025
Scholarship assessments	January 2026
Acceptance deadline	First Monday in March

Fees assistance

Every pupil is encouraged to aim high in all areas of Tudor life in order to fulfil their potential. The school's Aim Higher Programme offers all pupils the opportunity to broaden their horizons and excel in areas of particular interest to them. Scholarships are one element of this programme, and any pupils may apply at the appropriate entry point.

Tudor Hall offers a range of Scholarships at 11+, 13+ and 16+ in recognition of an individual's potential in a particular discipline. Scholars will benefit from the expertise of Tudor staff and a mentoring programme will be tailored to their interests and goals. In return, Scholars are expected to be ambassadors for that department, demonstrate enthusiasm and leadership, and be fully involved in the co-curricular programme of their chosen discipline.

Academic Scholarships are awarded for the duration of the pupil's time at Tudor Hall. Other Scholarships, awarded at 11+ and 13+ are subject to review at 16+.

The following Scholarships are on offer:

11+	Academic Music Dance	Drama Creative Arts
13+	Academic Music Sport	Drama Creative Arts Dance
16+	Academic Drama Sport	Dance Music Creative Arts (Art, Design Technology, Photography or Textiles)

Scholarships are awards made to pupils demonstrating a particularly high standard of achievement or potential. They will be reviewed annually and are retained subject to satisfactory performance and commitment.

Scholars at Tudor Hall are allocated a dedicated staff supervisor with whom they meet regularly. Their supervisor supports them in balancing the demands on their time and meeting their own expectations and those of their teachers. Supervisors also provide ongoing feedback and reporting.

Personal targets are set, and strategies considered to ensure that our Scholars are best placed to meet expectations. All Scholars are expected to contribute enthusiastically and regularly to the life of the school in

Every pupil is encouraged to aim high in all areas of Tudor life in order to fulfil their potential.

their area and to be ambassadors of learning throughout their time at Tudor Hall.

External candidates awarded practical Scholarship awards are required to meet Tudor Hall's general academic entry requirements.

It is possible for pupils to receive multiple Scholarships. Pupils applying for Todd and IIs can apply for up to two practical Scholarships and will be automatically considered for an Academic Scholarship. Sixth Form applicants may apply for an academic Scholarship and up to two practical Scholarships.

Scholarship is a competitive process and the criteria detailed in the pages that follow are guidelines only; they are there to help families determine whether to make an application. They are not success criteria.

Bursaries are available if parents can demonstrate, through a means testing process, that they would not otherwise be able to send their daughter to Tudor Hall due to limited financial means. If you wish to make a bursary application, we ask that you contact the Bursar on bursar@tudorhallschool.com

All Scholars are expected to contribute enthusiastically and regularly to the life of the school in their area and to be ambassadors of learning throughout their time at Tudor Hall.

Academic

Academic Scholarships are awarded to pupils who show a real Aim Higher approach to learning. We expect our Academic Scholars to be resourceful and experimental in how they acquire knowledge and skills, demonstrate leadership in lessons and be a positive role model to others. We want to see a willingness to persevere, the rigour to achieve excellence and the desire to embrace new opportunities.

An Academic Scholar will receive:

- regular one-to-one mentoring with a dedicated Scholarship supervisor who will offer support and guidance, assist with academic target setting and encourage aspirational goals;
- invitations to 'Explore' sessions led by staff, visiting speakers or other Scholars where a range of topics are discussed in smaller groups;
- a wide range of co-curricular and in-class enhancement activities;
- opportunities to enter both internal and external subject competitions, for example essays, short stories and experiments.

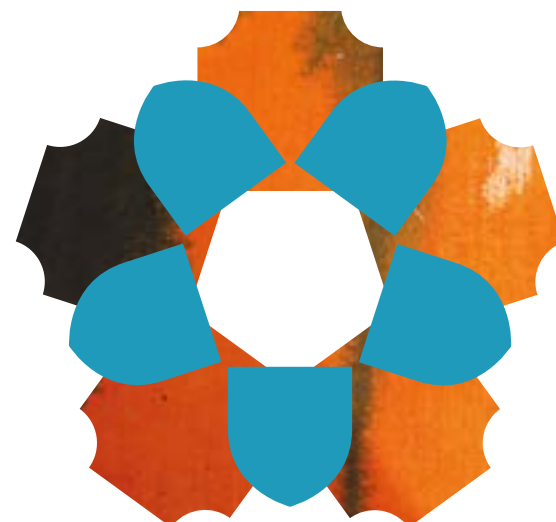
Assessment

There is no need to apply as 11+ and 13+ candidates will automatically be considered for an Academic Scholarship based on their performance in their entrance day assessment. Tudor Hall will seek a full confidential report from their current school.

Sixth Form (16+)

Pupils choose two subject specific papers and take a general paper. They will also have an interview with the Deputy Head (Academic) or Head of Sixth Form.

Academic Scholarships are awarded to pupils who show a real Aim Higher approach to learning.



Creative Arts

The Creative Arts subjects at Tudor Hall comprise Art, Textiles and Design and Technology (DT).

Scholarships are awarded to candidates who demonstrate a high level of skill and independent interest in one of Tudor's Creative Art subjects. Creative Art Scholars are ambassadors for the department; they help raise the standard of the creative arts within their own year group and the school through their skill set, enthusiasm and passion for the subject. They are expected to demonstrate commitment to and a strong work ethic in the creative arts by participating in co-curricular activities and making a full contribution to the artistic life of the school.

At 11+ candidates may apply for an Art Scholarship.

At 13+ candidates may apply for an Art Scholarship. The school will consider applications for DT and Textiles Scholarships from girls who have studied these subjects at their prep school.

At 16+ candidates may choose to apply for either an Art, DT or Textiles Scholarship.

Art, DT and Textiles Scholars will receive:

- a regular session led by the Head of Department, where they not only work on their own piece but also debate topics of interest and support each other's work. This mentoring approach is valuable to all involved and is excellent preparation for A Level and university;
- access to materials and studio space outside timetabled lessons;
- mentoring from a member of the department;
- opportunities to attend department trips and Scholars' exhibition visits;
- workshop opportunities;

Creative Art Scholars are ambassadors for the department; they help raise the standard of the creative arts within their own year group and the school through their skill set, enthusiasm and passion for the subject.

Facilities

Art is taught in our dedicated art studios which include a photography studio, a painting studio to explore drawing and painting using a wide range of media, a printmaking room to explore etching, wood cuts, collagraphy, and lino printing as well as a superb ceramic studio with opportunities to throw, cast, model and raku pieces of ceramic work.

DT is taught in a dedicated studio which includes rapid prototyping for CAD/CAM, 3D printing, laser cutting, casting and jewellery making, sublimation and digital printing. Our IT suite utilises industry standard software including Solidworks, Techsoft V3, Sketchup, Adobe Photoshop, InDesign, and Illustrator.

Textiles is taught in a suite of stunning purpose-built studios. The light and airy spaces enable experimentation with a wide range of processes and techniques. Screen printing, digital embroidery and hand embellishment are amongst the popular processes that encourage our pupils to create their own bespoke styles in fashion and textiles.

11+ and 13+ Scholarships

Assessment

Candidates for Art, Textiles and DT Scholarships must submit all completed forms by the deadline. Tudor Hall will seek a full confidential reference from the Head of their current school, plus a specialist reference from the Head of Department at their current school before assessment.

For 11+ and 13+ Scholarships, candidates' level of achievement, enthusiasm and future potential will be assessed during an interview to which candidates should bring a portfolio of up to six pieces of their own work. As well as their own work, they should also bring evidence of a recent gallery visit and a response to any artist's/ designer's work that they found interesting. This could be written or drawn or could be an item that they have made.



16+ Scholarships

Art Scholarship

The Art Scholarship assessment will take the form of:

- a general portfolio interview with the Head of Art, where candidates will be expected to confidently discuss processes and techniques using artistic terminology. The portfolio should include a variety of work produced in school or in the candidate's free time over the past two years. The portfolio is assessed on quality rather than quantity. Candidates should select eight pieces of work, one of which must be a journal or personal sketchbook;
- an observational test on the day.

Candidates for Art Scholarship will be required to demonstrate the following:

- a high level of visual and practical competence;
- an informed knowledge and interest in art and artists;
- the ability to work independently; at least two works from the portfolio must be work created outside the classroom.



DT Scholarship

The DT Scholarship assessment will take the form of:

- a general portfolio interview with the Head of DT, where candidates will be expected to confidently discuss processes and techniques using design terminology. The portfolio should include a variety of work produced in the past two years, either in school or in the candidate's free time. The work included should demonstrate the candidate's ability to present solutions to real world design problems and show clear user-led design thinking. Prototypes are welcomed but not necessary; photographs of previous modelling are desirable;
- a design challenge followed by a discussion of the work produced.

Candidates for a DT Scholarship will be required to demonstrate the following:

- a high level of visual and practical competence;
- the ability to think creatively and to enjoy the iterative design process, communicating new and exciting design solutions to real world problems;
- a high level of presentation and graphic drawing skills;
- an informed knowledge of designers or a design movement which has inspired them;
- the ability to work independently; at least two works from the portfolio must be work created outside the classroom.

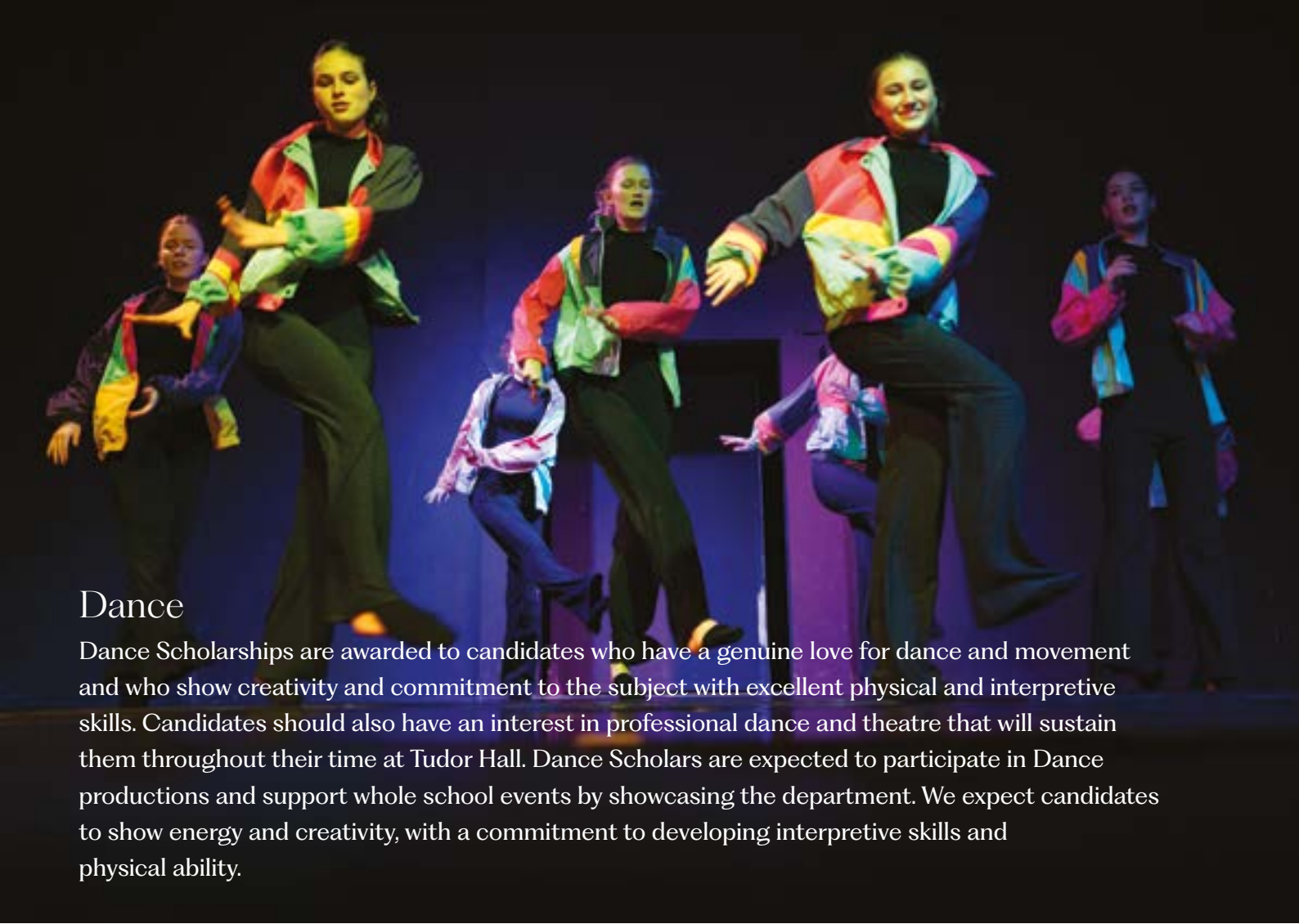
Textiles Scholarship

The Textiles Scholarship assessment will take the form of:

- a general portfolio interview with the Head of Textiles, where candidates should present a portfolio of independently sourced pieces, as well as work produced in school, which demonstrate creative interests. This work can be in a variety of media and should demonstrate personal enthusiasm and interest in visual creativity. Candidates may be asked about exhibitions visited or contacts they have made with artists or designers;

Candidates for a Textiles Scholarship will be required to demonstrate the following:

- a passion for textiles and fashion that they are able to demonstrate through individuality and creative ideas;
- the ability to analyse and respond to cultural arts movements, contemporary designers and innovative textiles in a confident manner;
- a high level of visual and practical competence;
- the ability to work independently; at least two works from the portfolio must be work created outside the classroom.



Dance

Dance Scholarships are awarded to candidates who have a genuine love for dance and movement and who show creativity and commitment to the subject with excellent physical and interpretive skills. Candidates should also have an interest in professional dance and theatre that will sustain them throughout their time at Tudor Hall. Dance Scholars are expected to participate in Dance productions and support whole school events by showcasing the department. We expect candidates to show energy and creativity, with a commitment to developing interpretive skills and physical ability.

Facilities

A Dance Scholar will receive:

- a dedicated Dance supervisor who will meet with them regularly;
- workshops with specialist teachers and industry professionals;
- regular theatre trips;
- performance roles in the Dance showcases;
- one-to-one choreographic tutoring when creating sequences for shows;
- opportunities to lead events and assist with Dance clubs and workshops.

Candidates for Dance Scholarships must submit all completed forms by the deadline. Tudor Hall will seek a full confidential reference from the Head of their current school, plus a specialist reference from the Head of Dance at their current school or external teacher, before assessment.

Candidates for Dance Scholarships will be required to demonstrate the following:

- commitment and strong ability within a technical Dance class;
- the ability to use clear interpretive and creative skills during performance;
- the ability to listen to corrections and use them to develop and improve their skills.

The Dance Scholarship auditions will involve the following elements:

- taking part in a technical Dance class;
- presenting a prepared performance piece in any dance style of the candidate's own choreography for the duration of one minute, and for which they should provide their own accompaniment;
- performing a short, improvised sequence to a stimulus given by the Head of Dance. This may be, for example, poetry, a piece of sculpture, an object or a sound.

There will also be an interview with the Head of Dance, during which the candidate should present a side of A4 documenting their performance history, displaying commitment and a genuine interest in the subject.

We expect candidates to show energy and creativity, with a commitment to developing interpretive skills and physical ability.

Drama

Drama Scholarships are awarded to candidates who display a talent for acting or technical elements of Drama in both lessons and the co-curriculum. Candidates will be expected to show creativity, verve and commitment to the subject and display excellent vocal and physical skills. Candidates should also have a feeling for text, atmosphere and character and an interest in the theatre that will sustain them throughout their time at Tudor. Drama Scholars are expected to participate in Drama productions and support whole school events by showcasing the department, to be ambassadors for Drama, to participate in all Scholar programme events and to take an active and positive role within the school.

A Drama Scholar will receive:

- a dedicated Drama supervisor as well as pastoral and professional development advice and guidance from the Head of Drama;
- workshops with specialist teachers and industry professionals;
- regular theatre trips;
- leadership involvement in clubs and instruction in technical theatre;
- involvement in the junior and whole school productions;
- support to apply for professional castings and auditions.

Facilities

Drama is taught in our 120-seater black box studio theatre with raked seating, balcony, foyer, green room, lift, technical facilities and costume rooms. Performances are staged in our 450-seater school hall with raked seating and state of the art LED lighting, sound system and proscenium arch stage, trap door and extensive backstage area. Curriculum Drama is taught in our studio theatre by specialist Drama teachers. Our extensive LAMDA program, rehearsals, co-curricular Drama and the Drama Scholars' programme take place in our studio theatre, rehearsal rooms or sprung floor ballroom.

Assessment

Candidates for Drama Scholarships must submit all completed forms by the published deadline. Tudor Hall will seek a full confidential report from their current school, plus a specialist reference from the Head of Drama at their current school before assessment.

Candidates for Drama Scholarships will be required to demonstrate the following:

- the ability to analyse and evaluate a play;
- the use of their own skills and imagination to create a meaningful performance;
- the ability to take direction and use it to improve their skills.

The Drama Scholarship auditions will involve the following elements:

- taking part in a voice class and a movement workshop;
- working alone and in a group under directorial intervention;
- presenting a dramatic piece chosen by Tudor Hall, learnt and prepared beforehand.

There will also be an interview during which the candidates should present a side of A4 documenting their performance history, displaying commitment and a genuine interest in the subject.

Candidates will be expected to show creativity, verve and commitment to the subject and display excellent vocal and physical skills.



Music

Music Scholarships are awarded to talented musicians with at least a Grade 3 in one instrument (including voice). Music Scholars are ambassadors for the department; they help raise the standard of music-making within their own year group and the school through their skill set, enthusiasm and passion for the subject. They are expected to demonstrate commitment to and a strong work ethic in music by participating in co-curricular music activities and making a full contribution to music in school. Music Scholars are expected to perform in public, both in and out of school, participate in all Scholar programme events and to take an active and positive role within the school.

A Music Scholar will receive:

- a dedicated Music supervisor who reviews progress both in and out of school;
- pastoral and professional advice and guidance from the Heads of Music;
- masterclasses and workshops with professional musicians;
- solo roles in concerts and high-profile events;
- the opportunity to lead sectionals, take rehearsals and start up their own groups.

Facilities

Music at Tudor Hall takes place in a purpose-built music school, which houses thirteen practice rooms, a music technology suite and classroom. There is a concert hall at its centre which provides a performance space for our orchestra, band and choir rehearsals and for our regular Music School Concerts.

Music Scholars are expected to perform in public, both in and out of school, participate in all Scholar programme events and to take an active and positive role within the school.

Assessment

Candidates for Music Scholarships must submit all completed forms by the deadline. Tudor Hall will seek a full confidential reference from the Head of their current school, a specialist reference from the Head of Music of their current school, and a reference from their instrumental/singing teacher before assessment.

Expected ability in at least one instrument at the following entry points, although examinations do not need to have been taken:

- Grade 3 standard at 11+
- Grade 5 standard at 13+
- Grade 7 standard at 16+

The Music Scholarship assessment will take the form of:

- a practical audition on one or more instruments/voice;
- sight singing and aural skills;
- an interview during which the candidates should present a side of A4 documenting their performance history, displaying commitment and a genuine interest in the subject.

Candidates with one instrument (including voice) should prepare two contrasting pieces for audition. Those with more than one instrument (including voice) should prepare one piece on each instrument.



Sport

Sport Scholarships are awarded to candidates who are outstanding in sport. Sport Scholars are expected to play an active and positive role amongst the pupils, to be ambassadors for sport throughout their time at Tudor Hall, to be willing to take part in matches and competitions as required by the department and to participate in all Scholar programme events.

A Sport Scholar will receive:

- a dedicated mentor who meets with them weekly to discuss academic performance, their sporting schedule and general wellbeing;
- a weekly programme that includes lectures with nutritionists, physiotherapists, sport psychologists and other specialists in the field;
- strength and conditioning coaching, both one-to-one and group sessions;
- Sport specific coaching and performance analysis programmes;
- visits to watch elite sport and talks by top level athletes.

Facilities

Our facilities on site include a heated indoor swimming pool, a floodlit astroturf which houses nine netball courts and nine tennis courts, five floodlit hard tennis/netball courts, a sports' hall, a grass athletics track and field event area, and a state-of-the-art fitness suite with cardio machines and weights.

We also have access to Banbury Harriers Athletics club, with their all-weather athletics track, Banbury Hockey Club, Wade Gymnastics Club, and Wood Green 50 metre outdoor swimming pool.

Assessment

Candidates for Sport Scholarships must submit all completed forms, including a CV (not exceeding one side of A4) summarising sporting activities and achievements over the last two years, by the published deadline. Tudor Hall will seek a full confidential report from their current school, plus a specialist reference from the Head of PE at their current school before assessment. If relevant, Tudor Hall will also seek specialist references from external coaches/clubs.

Candidates are expected to

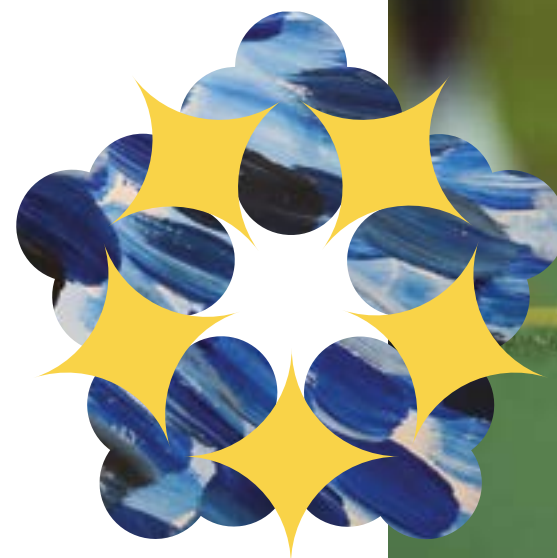
- Be outstanding in any one sport (for example, performing at county level or above in any sport), or
- Have the potential to perform at regional or county level in two sports.

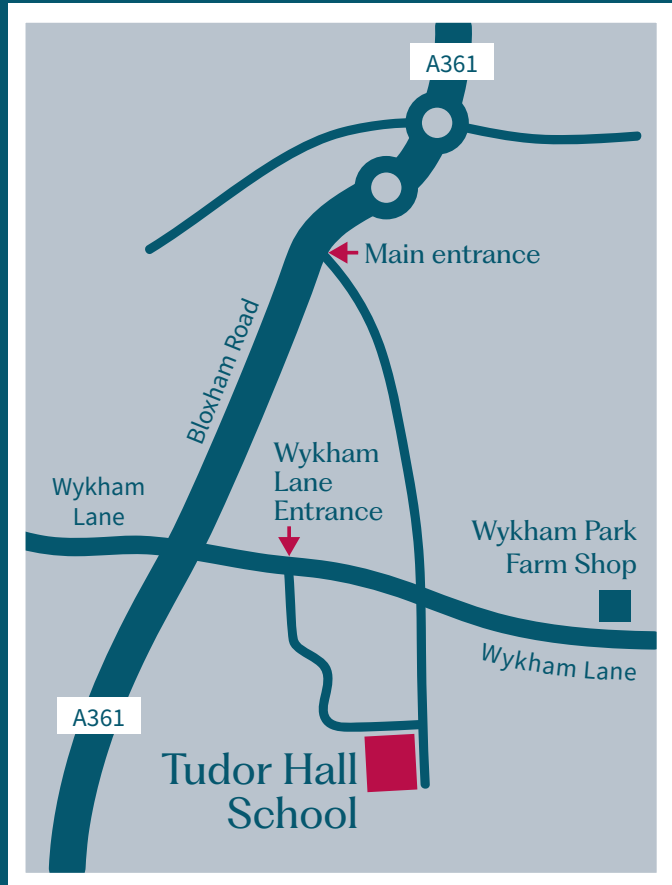
To support the CV, candidates are asked to bring a portfolio of achievements (which may include video evidence, if appropriate) for discussion at interview.

The Sport Scholarship assessment will take the form of:

- fitness assessments;
- an assessment of candidates' practical skills individually and within a team;
- an interview with the Director of Sport where the candidate's CV and portfolio will be discussed.

Scholars are expected to play an active and positive role amongst the pupils, to be ambassadors for sport throughout their time at Tudor Hall, to be willing to take part in matches and competitions as required by the department and to participate in all Scholar programme events.





TUDOR
HALL

Headmistress
Ms Julie Lodrick BA (Hons), MEd, PGCE

Chair of Governors
Alison Darling

Tudor Hall School, Wykham Park, Banbury, Oxfordshire OX16 9UR
01295 756259 | admissions@tudorhallschool.com

www.tudorhallschool.com

APR 25