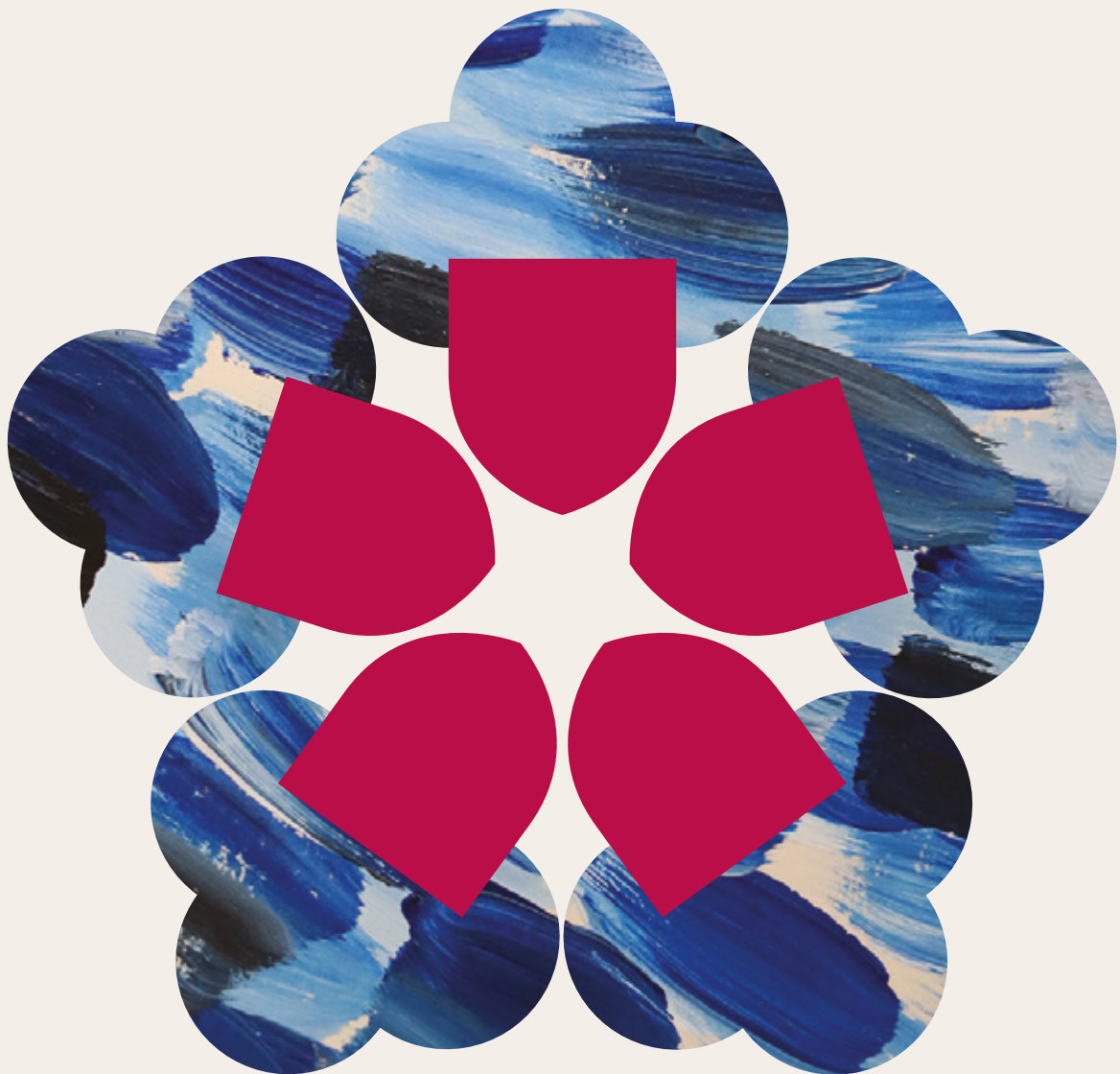


# ADMISSIONS

Boarding and Day · Girls 11 - 18

2025 - 2026



**TUDOR**  
HALL

# Habeo ut Dem

## I have that I may give

Our motto, 'I have that I may give', infuses life in Tudor Hall.

'I have that I may give' is interpreted in many different ways. Every day at Tudor Hall the many facets of 'having' are reflected on, and every day 'giving' is interpreted richly and diversely.

Founded in 1850, vitalised in 1939 by Headmistress Nesta Inglis, settled in Wykham Park in Oxfordshire in 1946, Tudor Hall is one of the oldest girls' boarding and day schools in Britain.

We have over 170 years of bringing our motto to life. Over 170 years of giving shape to successive visions... each created for the exciting, challenging, wonderful era we have.

We would love to hear from you about the qualities that your daughter has and what she wants to give the world. We extend a warm invitation to you and your daughter to visit us at Tudor Hall.



## Welcome

Choosing a school for your daughter is an important decision and we aim to give you the information to help you decide whether Tudor Hall is the right school. We welcome pupils from many different cultures, faiths and backgrounds and it is our intention to make our selection procedure equally accessible to all candidates. We are here to guide you through every step of the admissions process.

### Open Mornings

We encourage parents to attend an Open Morning when their daughter is in Year 5 or earlier. These are held in May and September and provide an informal introduction to Tudor Hall.

### Open Fridays

We hold 'Open Fridays' once a month to provide an opportunity to see the school on a typical school day, have a tour and meet the Senior Team.

### Visits

Before applying for a place, we strongly recommend, where possible, that prospective pupils and their parents visit the school to meet with Julie Lodrick, the Headmistress, staff and pupils and to see the facilities. We suggest you visit in the two years prior to assessments; visits can be arranged by contacting the Admissions Team on [admissions@tudorhallschool.com](mailto:admissions@tudorhallschool.com)

### Entry points

The main points of entry are at Todd (Year 7), IIs (Year 9) and LVI (Year 12). Occasionally, places are available in IIs (Year 8) and IVs (Year 10).

Registration for 11+ and 13+ entry can be completed at any stage but should be received by January of Year 5 (i.e., two years prior to entry for 11+ and four years prior to entry for 13+). Applications for 16+ entry should be submitted by the end of the Autumn Term of the year prior to entry.

For those attending a 13+ prep school, assessments for entry are held in the Autumn Term of Year 6 and offers of a place are made in December of that year.

If you wish to proceed with an application, we ask that you complete our registration form in addition to sending a £200 registration fee together with a copy of your daughter's latest school report and passport. On receipt of the registration fee and these documents, your daughter will be registered for entry and a member of the Admissions Team will be in touch to confirm the next steps.

## Contents

Life at Tudor .....	4
Admissions process .....	5
Admissions calendar .....	6
Fees assistance .....	7
Academic .....	8
Creative Arts .....	10
Dance .....	13
Drama .....	14
Music .....	16
Sport .....	18



# Life at Tudor

## Joining as a boarder

Tudor Hall is one of the oldest girls' boarding schools in the UK and we remain committed to our boarding ethos. Being a boarder at Tudor Hall offers a home from home, the opportunity to develop independence and life skills under the care and guidance of house staff who are experts in the needs of the year group. Our horizontal boarding structure fosters an environment where boarders develop a strong sense of loyalty and inclusivity through community living. Girls join Tudor either as a boarder or a day girl and everyone is included in the broad and exciting range of opportunities on offer during the week and at the weekend.

To support our boarding ethos and to maintain a strong sense of community, all our boarders remain in school for the closed weekends.

Especially during the first few years of boarding, we recognise that the younger girls may benefit from additional time at home to help them settle in and adjust to boarding life. Other than closed weekends, girls in Todd, IIs and IIIs are permitted to take six additional short exeats throughout the year, leaving on Saturday after their commitments and returning to school on Sunday evening.

The IVs and Vs are permitted to take five additional short exeats throughout the year.

## Sixth Form

There is great flexibility at weekends to accommodate university open days, work experience and family commitments. The LVI are permitted to take seven short weekends throughout the year.

The wellbeing of our pupils and families is at the very heart of Tudor Hall and we will always consider requests for leave in term time. These requests should be submitted through house staff.

## Joining as a day girl

As a day pupil in a boarding school, girls have access to all facilities and activities during evenings and weekends.

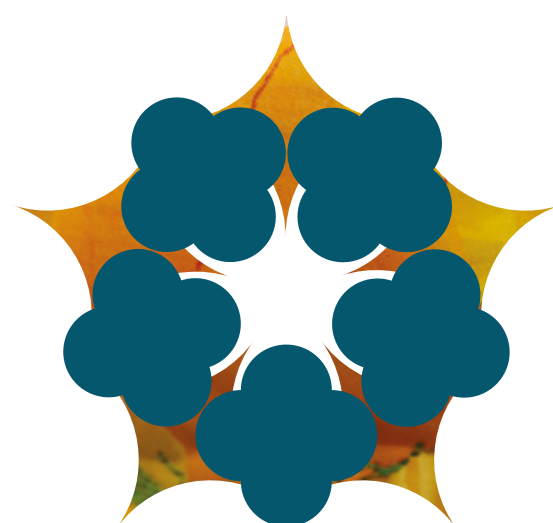
Bed space permitting, day girls from Todd to Vs are able to board for two fixed nights every week, as set by each house. Parents are required to sign up for this option on a termly basis.

Each term, the Housemistress will alert parents to any events which will result in a particularly late end to the day for their daughter. If a bed is available on these occasions, girls may board for that night.

We will also offer all day girls a trial week of boarding, should families be considering our full boarding option. Trial boarding weeks will take place in the Spring and Summer Terms.

## Parents

Parents are always welcome to join us on a Saturday to watch their daughters play matches, attend weekend activities, such as the annual Dog Show and Tudor Fest music festival, or to spend some time together at the local farm shop.



## Todd (Year 7)

Girls applying for a place in September 2025 should be registered by 1st June 2024 and will be invited to a Taster Day later that month. Entrance assessments will take place on Saturday 16th November 2024. The entry process for Todd is as follows:

- Candidates will sit computer-based, nationally standardised tests and complete a short creative writing task.
- Candidates are interviewed by senior members of staff and take part in a range of activities.
- A reference is requested from the candidate's current school.

The highest performing candidates will be considered for an Academic Scholarship.

Both general entry and Academic Scholarship entry decisions will be based on results from computer-based tests. No preparation is required for these tests and no practice materials are available.

## IIIs (Year 9)

Girls applying for a place in September 2027 should be registered by 1st June 2024. Entrance assessments will take place on Saturday 16th November 2024. The entry process for IIIs is as follows:

- Candidates will sit computer-based, nationally standardised tests and complete a short creative writing task.
- Candidates are interviewed by senior members of staff and take part in a range of activities.
- A reference is requested from the candidate's current school.

The highest performing candidates will be considered for an Academic Scholarship.

Entry decisions will be based on results from computer-based tests, performance on the day and the school reference. No preparation is required for these tests and no practice materials are available.

## LVI (Year 12)

Applications to the Sixth Form will be considered at any time during the year. External

# Admissions process

candidates are advised to apply by the end of the Autumn Term the year preceding entry to guarantee that they are able to study their preferred combination of A Level subjects.

References will be sought from their current school and candidates will have an interview with either the Deputy Head Academic or the Head of Sixth Form.

For entry into the Sixth Form, candidates are required to have at least six good passes at GCSE, including English and Maths.

## Other applications

Where we have capacity, applications are welcome for other year groups. Please check availability with the Admissions Team on [admissions@tudorhallschool.com](mailto:admissions@tudorhallschool.com) before proceeding.

## International admissions

We welcome international applications and, depending on availability, we accept a limited number of girls for short stays of one term to one year. Places are offered the year prior to entry and girls are required to sit an entry assessment in their home country. For all successful international applications, we request a deposit of £1,000 to secure the place for pupils staying for one year only, or a term's fees for those staying more than one year.

International families are encouraged to visit the school in person and should contact the Admissions Team to arrange a visit.

Following receipt of an application, international applicants are required to sit an entry assessment in their home country before having an interview with one of the senior staff.

Places are strictly limited in each year group and therefore we recommend that international applicants complete the International Registration Form and pay the international registration fee of £400 as early as possible to ensure that we have spaces available in the cohort.

Pupils whose parents are overseas are required by the school's guardianship policy to have a suitable educational guardian. We are unable to begin the visa application process until the guardianship agreement has been submitted to us with the signatures of both parents and





the educational guardians. The guardian should be from a recognised guardianship company (we recommend using an AEGIS-registered company). Full guardianship arrangements must be maintained throughout the pupil's time in the UK and at the school. A copy of the guardianship policy and the guardianship agreement will be sent to complete once the place has been accepted and the deposit received. Tudor Hall will process the CAS application in the term prior to entry and supply the necessary formal CAS to enable parents to apply for a child student visa.

Accepting a place

To formally accept an offer of a place, we require a completed acceptance form, parent contract and deposit. Upon receipt of these, the place will be secure. For those joining IVs or LVI, we also require a subject options form that will be sent electronically. Closer to the point of entry, a Parents' Handbook and forms for completion will be sent along with any other paperwork required.

Admissions calendar

Application deadline	Saturday 1st June 2024
Year 5 Taster Day	Tuesday 25th June 2024
Sixth Form Open Morning	Saturday 14th September 2024
Open Morning	Saturday 28th September 2024
Entrance assessments	Saturday 16th November 2024
Scholarship assessments	January 2025
Activity day (Todd and Ills offered)	February 2025
Acceptance deadline	First Monday in March

Every pupil is encouraged to aim high in all areas of Tudor life in order to fulfil their potential. The school's Aim Higher Programme offers all pupils the opportunity to broaden their horizons and excel in areas of particular interest to them. Scholarships are one element of this programme, and any pupils may apply at the appropriate entry point.

Tudor Hall offers a range of Scholarships at 11+, 13+ and 16+ in recognition of an individual's potential in a particular discipline. Scholars will benefit from the expertise of Tudor staff and a mentoring programme will be tailored to their interests and goals. In return, Scholars are expected to be ambassadors for that department, demonstrate enthusiasm and leadership, and be fully involved in the co-curricular programme of their chosen discipline.

Academic Scholarships are awarded for the duration of the pupil's time at Tudor Hall. Other Scholarships, awarded at 11+ and 13+ are subject to review at 16+.

The following Scholarships are on offer:

11+	Academic	Drama
	Music	Creative Arts
	Dance	
13+	Academic	Drama
	Music	Creative Arts
	Sport	Dance
16+	Academic	Dance
	Drama	Music
	Sport	Creative Arts
		(Art, Design Technology, Photography or Textiles)

Scholarships are awards made to pupils demonstrating a particularly high standard of achievement or potential. They will be reviewed annually and are retained subject to satisfactory performance and commitment.

Scholars at Tudor Hall are allocated a dedicated staff supervisor with whom they meet regularly. Their supervisor supports them in balancing the demands on their time and

meeting their own expectations and those of their teachers. Supervisors also provide ongoing feedback and reporting.

Personal targets are set, and strategies considered to ensure that our Scholars are best placed to meet expectations. All Scholars are expected to contribute enthusiastically and regularly to the life of the school in their area and to be ambassadors of learning throughout their time at Tudor Hall.

External candidates awarded practical Scholarship awards are required to meet Tudor Hall's general academic entry requirements.

It is possible for pupils to receive multiple Scholarships. Pupils applying for Todd and Ills can apply for up to two practical Scholarships and will be automatically considered for an Academic Scholarship. Sixth Form applicants may apply for an academic Scholarship and up to two practical Scholarships.

Scholarship is a competitive process and the criteria detailed in the pages that follow are guidelines only; they are there to help families determine whether to make an application. They are not success criteria.

Bursaries are available if parents can demonstrate, through a means testing process, that they would not otherwise be able to send their daughter to Tudor Hall due to limited financial means. If you wish to make a bursary application, we ask that you contact the Bursar on [bursar@tudorhallschool.com](mailto:bursar@tudorhallschool.com)



## Academic

Academic Scholarships are awarded to pupils who show a real Aim Higher approach to learning. We expect our Academic Scholars to be resourceful and experimental in how they acquire knowledge and skills, demonstrate leadership in lessons and be a positive role model to others. We want to see a willingness to persevere, the rigour to achieve excellence and the desire to embrace new opportunities.

An Academic Scholar will receive:

- regular one-to-one mentoring with a dedicated Scholarship supervisor who will offer support and guidance, assist with academic target setting and encourage aspirational goals;
- invitations to 'Explore' sessions led by staff, visiting speakers or other Scholars where a range of topics are discussed in smaller groups;
- a wide range of co-curricular and in-class enhancement activities;
- opportunities to enter both internal and external subject competitions, for example essays, short stories and experiments.

### Assessment

There is no need to apply as 11+ and 13+ candidates will automatically be considered for an Academic Scholarship based on their performance in their entrance day assessment. Tudor Hall will seek a full confidential report from their current school.

### Sixth Form (16+)

Pupils choose two subject specific papers and take a general paper. They will also have an interview with the Deputy Head (Academic) or Head of Sixth Form.





# Creative Arts

The Creative Arts subjects at Tudor Hall comprise Art, Textiles and Design and Technology (DT).

Scholarships are awarded to candidates who demonstrate a high level of skill and independent interest in one of Tudor’s Creative Art subjects. Creative Art Scholars are ambassadors for the department; they help raise the standard of the creative arts within their own year group and the school through their skill set, enthusiasm and passion for the subject. They are expected to demonstrate commitment to and a strong work ethic in the creative arts by participating in co-curricular activities and making a full contribution to the artistic life of the school.

At 11+ candidates may apply for an Art Scholarship.

At 13+ candidates may apply for an Art Scholarship. The school will consider applications for DT and Textiles Scholarships from girls who have studied these subjects at their prep school.

At 16+ candidates may choose to apply for either an Art, DT or Textiles Scholarship.

Art, DT and Textiles Scholars will receive:

- a regular session led by the Head of Department, where they not only work on their own piece but also debate topics of interest and support each other’s work. This mentoring approach is valuable to all involved and is excellent preparation for A Level and university;
- access to materials and studio space outside timetabled lessons;
- mentoring from a member of the department;
- opportunities to attend department trips and Scholars’ exhibition visits;
- workshop opportunities;

### Facilities

Art is taught in our dedicated art studios which include a photography studio, a painting studio to explore drawing and painting using a wide range of media, a printmaking room to explore etching, wood cuts, collagraphy, and lino printing as well as a superb ceramic studio with opportunities to throw, cast, model and raku pieces of ceramic work.

DT is taught in a dedicated studio which includes rapid prototyping for CAD/CAM, 3D printing, laser cutting, casting and jewellery making, sublimation and digital printing. Our IT suite utilises industry standard software

including Solidworks, Techsoft V3, Sketchup, Adobe Photoshop, InDesign, and Illustrator.

Textiles is taught in a suite of stunning purpose-built studios. The light and airy spaces enable experimentation with a wide range of processes and techniques. Screen printing, digital embroidery and hand embellishment are amongst the popular processes that encourage our pupils to create their own bespoke styles in fashion and textiles.

### 11+ and 13+ Scholarships

#### Assessment

Candidates for Art, Textiles and DT Scholarships must submit all completed forms by the deadline. Tudor Hall will seek a full confidential reference from the Head of their current school, plus a specialist reference from the Head of Department at their current school before assessment.

For 11+ and 13+ Scholarships, candidates’ level of achievement, enthusiasm and future potential will be assessed during an interview to which candidates should bring a portfolio of up to six pieces of their own work. As well as their own work, they should also bring evidence of a recent gallery visit and a response to any artist’s/designer’s work that they found interesting. This could be written or drawn or could be an item that they have made.

### 16+ Scholarships

#### Art Scholarship

The Art Scholarship assessment will take the form of:

- a general portfolio interview with the Head of Art, where candidates will be expected to confidently discuss processes and techniques using artistic terminology. The





portfolio should include a variety of work produced in school or in the candidate's free time over the past two years. The portfolio is assessed on quality rather than quantity. Candidates should select eight pieces of work, one of which must be a journal or personal sketchbook;

- an observational test on the day.

Candidates for Art Scholarship will be required to demonstrate the following:

- a high level of visual and practical competence;
- an informed knowledge and interest in art and artists;
- the ability to work independently; at least two works from the portfolio must be work created outside the classroom.

### DT Scholarship

The DT Scholarship assessment will take the form of:

- a general portfolio interview with the Head of DT, where candidates will be expected to confidently discuss processes and techniques using design terminology. The portfolio should include a variety of work produced in the past two years, either in school or in the candidate's free time. The

work included should demonstrate the candidate's ability to present solutions to real world design problems and show clear user-led design thinking. Prototypes are welcomed but not necessary; photographs of previous modelling are desirable;

- a design challenge followed by a discussion of the work produced.

Candidates for a DT Scholarship will be required to demonstrate the following:

- a high level of visual and practical competence;
- the ability to think creatively and to enjoy the iterative design process, communicating new and exciting design solutions to real world problems;
- a high level of presentation and graphic drawing skills;
- an informed knowledge of designers or a design movement which has inspired them;
- the ability to work independently; at least two works from the portfolio must be work created outside the classroom.

### Textiles Scholarship

The Textiles Scholarship assessment will take the form of:

- a general portfolio interview with the Head of Textiles, where candidates should present a portfolio of independently sourced pieces, as well as work produced in school, which demonstrate creative interests. This work can be in a variety of media and should demonstrate personal enthusiasm and interest in visual creativity. Candidates may be asked about exhibitions visited or contacts they have made with artists or designers;

Candidates for a Textiles Scholarship will be required to demonstrate the following:

- a passion for textiles and fashion that they are able to demonstrate through individuality and creative ideas;
- the ability to analyse and respond to cultural arts movements, contemporary designers and innovative textiles in a confident manner;
- a high level of visual and practical competence;
- the ability to work independently; at least two works from the portfolio must be work created outside the classroom.

## Dance

Dance Scholarships are awarded to candidates who have a genuine love for dance and movement and who show creativity and commitment to the subject with excellent physical and interpretive skills. Candidates should also have an interest in professional dance and theatre that will sustain them throughout their time at Tudor Hall. Dance Scholars are expected to participate in Dance productions and support whole school events by showcasing the department. We expect candidates to show energy and creativity, with a commitment to developing interpretive skills and physical ability.



### Facilities

A Dance Scholar will receive:

- a dedicated Dance supervisor who will meet with them regularly;
- workshops with specialist teachers and industry professionals;
- regular theatre trips;
- performance roles in the Dance showcases;
- one-to-one choreographic tutoring when creating sequences for shows;
- opportunities to lead events and assist with Dance clubs and workshops.

Candidates for Dance Scholarships must submit all completed forms by the deadline. Tudor Hall will seek a full confidential reference from the Head of their current school, plus a specialist reference from the Head of Dance at their current school or external teacher, before assessment.

Candidates for Dance Scholarships will be required to demonstrate the following:

- commitment and strong ability within a technical Dance class;

- the ability to use clear interpretive and creative skills during performance;
- the ability to listen to corrections and use them to develop and improve their skills.

The Dance Scholarship auditions will involve the following elements:

- taking part in a technical Dance class;
- presenting a prepared performance piece in any dance style of the candidate's own choreography for the duration of one minute, and for which they should provide their own accompaniment;
- performing a short, improvised sequence to a stimulus given by the Head of Dance. This may be, for example, poetry, a piece of sculpture, an object or a sound.

There will also be an interview with the Head of Dance, during which the candidate should present a side of A4 documenting their performance history, displaying commitment and a genuine interest in the subject.





## Drama

Drama Scholarships are awarded to candidates who display a talent for acting or technical elements of Drama in both lessons and the co-curriculum. Candidates will be expected to show creativity, verve and commitment to the subject and display excellent vocal and physical skills. Candidates should also have a feeling for text, atmosphere and character and an interest in the theatre that will sustain them throughout their time at Tudor. Drama Scholars are expected to participate in Drama productions and support whole school events by showcasing the department, to be ambassadors for Drama, to participate in all Scholar programme events and to take an active and positive role within the school.

A Drama Scholar will receive:

- a dedicated Drama supervisor as well as pastoral and professional development advice and guidance from the Head of Drama;
- workshops with specialist teachers and industry professionals;
- regular theatre trips;
- leadership involvement in clubs and instruction in technical theatre;
- involvement in the junior and whole school productions;
- support to apply for professional castings and auditions.

### Facilities

Drama is taught in our 120-seater black box studio theatre with raked seating, balcony, foyer, green room, lift, technical facilities and costume rooms. Performances are staged in our 450-seater school hall with raked seating and state of the art LED lighting, sound system and proscenium arch stage, trap door and extensive backstage area. Curriculum Drama is taught in our studio theatre by specialist Drama teachers. Our extensive LAMDA program, rehearsals, co-curricular Drama and the Drama Scholars' programme take place in our studio theatre, rehearsal rooms or sprung floor ballroom.

### Assessment

Candidates for Drama Scholarships must submit all completed forms by the published deadline. Tudor Hall will seek a full confidential report from their current school, plus a specialist reference from the Head of Drama at their current school before assessment.

Candidates for Drama Scholarships will be required to demonstrate the following:

- the ability to analyse and evaluate a play;
- the use of their own skills and imagination to create a meaningful performance;
- the ability to take direction and use it to improve their skills.

The Drama Scholarship auditions will involve the following elements:

- taking part in a voice class and a movement workshop;
- working alone and in a group under directorial intervention;
- presenting a dramatic piece chosen by Tudor Hall, learnt and prepared beforehand.

There will also be an interview during which the candidates should present a side of A4 documenting their performance history, displaying commitment and a genuine interest in the subject.





## Music

Music Scholarships are awarded to talented musicians with at least a Grade 3 in one instrument (including voice). Music Scholars are ambassadors for the department; they help raise the standard of music-making within their own year group and the school through their skill set, enthusiasm and passion for the subject. They are expected to demonstrate commitment to and a strong work ethic in music by participating in co-curricular music activities and making a full contribution to music in school. Music Scholars are expected to perform in public, both in and out of school, participate in all Scholar programme events and to take an active and positive role within the school.

A Music Scholar will receive:

- a dedicated Music supervisor who reviews progress both in and out of school;
- pastoral and professional advice and guidance from the Heads of Music;
- masterclasses and workshops with professional musicians;
- solo roles in concerts and high-profile events;
- the opportunity to lead sectionals, take rehearsals and start up their own groups.

### Facilities

Music at Tudor Hall takes place in a purpose-built music school, which houses thirteen practice rooms, a music technology suite and classroom. There is a concert hall at its centre which provides a performance space for our orchestra, band and choir rehearsals and for our regular Music School Concerts.

### Assessment

Candidates for Music Scholarships must submit all completed forms by the deadline. Tudor Hall will seek a full confidential reference from the Head of their current school, a specialist reference from the Head of Music of their current school, and a reference from their instrumental/singing teacher before assessment.

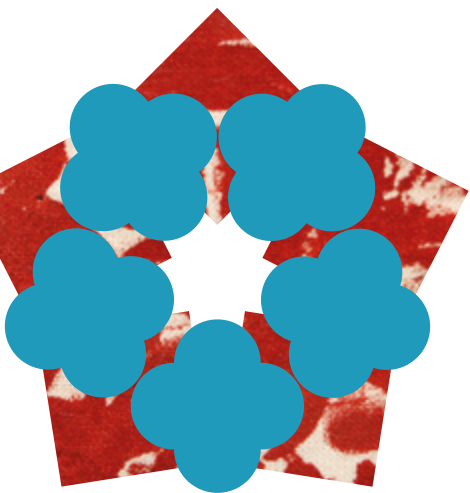
Expected ability in at least one instrument at the following entry points, although examinations do not need to have been taken:

- Grade 3 standard at 11+
- Grade 5 standard at 13+
- Grade 7 standard at 16+

The Music Scholarship assessment will take the form of:

- a practical audition on one or more instruments/voice;
- sight singing and aural skills;
- an interview during which the candidates should present a side of A4 documenting their performance history, displaying commitment and a genuine interest in the subject.

Candidates with one instrument (including voice) should prepare two contrasting pieces for audition. Those with more than one instrument (including voice) should prepare one piece on each instrument.





## Sport

Sport Scholarships are awarded to candidates who are outstanding in sport. Sport Scholars are expected to play an active and positive role amongst the pupils, to be ambassadors for sport throughout their time at Tudor Hall, to be willing to take part in matches and competitions as required by the department and to participate in all Scholar programme events.

A Sport Scholar will receive:

- a dedicated mentor who meets with them weekly to discuss academic performance, their sporting schedule and general wellbeing;
- a weekly programme that includes lectures with nutritionists, physiotherapists, sport psychologists and other specialists in the field;
- strength and conditioning coaching, both one-to-one and group sessions;
- Sport specific coaching and performance analysis programmes;
- visits to watch elite sport and talks by top level athletes.

### Facilities

Our facilities on site include a heated indoor swimming pool, a floodlit astroturf which houses nine netball courts and nine tennis courts, five floodlit hard tennis/netball courts, a sports' hall, a grass athletics track and field event area, and a state-of-the-art fitness suite with cardio machines and weights.

We also have access to Banbury Harriers Athletics club, with their all-weather athletics track, Banbury Hockey Club, Wade Gymnastics Club, and Wood Green 50 metre outdoor swimming pool.

### Assessment

Candidates for Sport Scholarships must submit all completed forms, including a CV (not exceeding one side of A4) summarising sporting activities and achievements over the last two years, by the published deadline. Tudor Hall will seek a full confidential report from their current school, plus a specialist reference from the Head of PE at their current school before assessment. If relevant, Tudor Hall will also seek specialist references from external coaches/clubs.

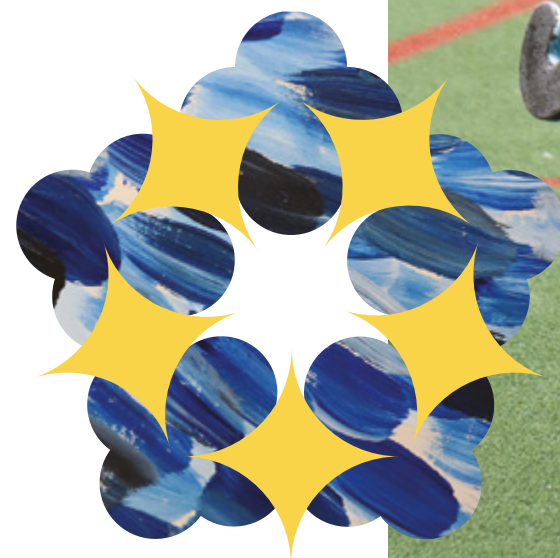
Candidates are expected to

- Be outstanding in any one sport (for example, performing at county level or above in any sport), or
- Have the potential to perform at regional or county level in two sports.

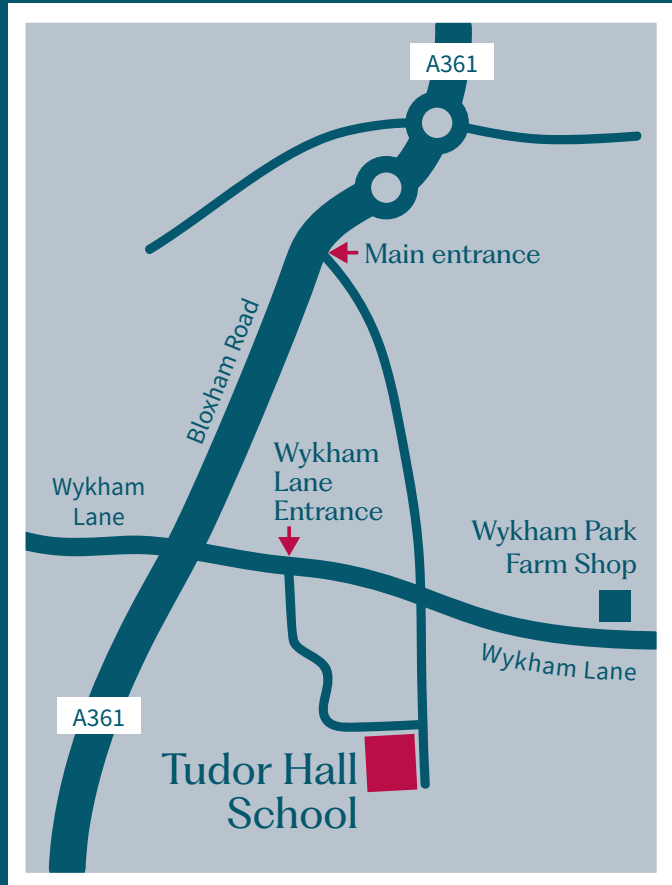
To support the CV, candidates are asked to bring a portfolio of achievements (which may include video evidence, if appropriate) for discussion at interview.

The Sport Scholarship assessment will take the form of:

- fitness assessments;
- an assessment of candidates' practical skills individually and within a team;
- an interview with the Director of Sport where the candidate's CV and portfolio will be discussed.







TUDOR  
HALL

Headmistress  
Ms Julie Lodrick BA (Hons), MEd, PGCE

Chair of Governors  
Alison Darling

Tudor Hall School | Wykham Park | Banbury | OX16 9UR  
01295 756259 | [admissions@tudorhallschool.com](mailto:admissions@tudorhallschool.com)

[www.tudorhallschool.com](http://www.tudorhallschool.com)

MAY 24